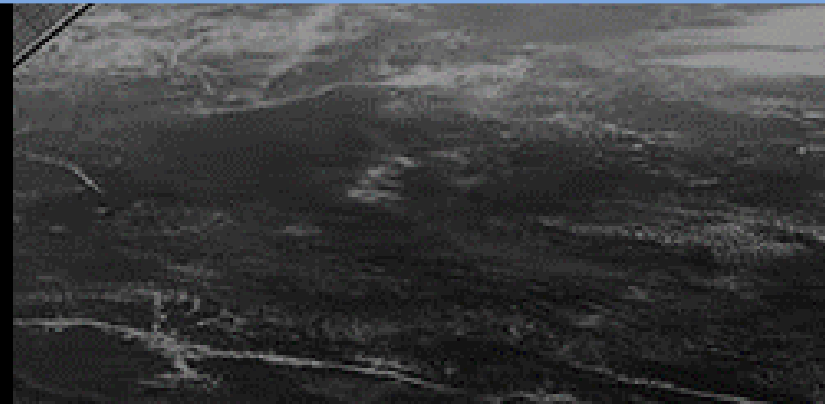
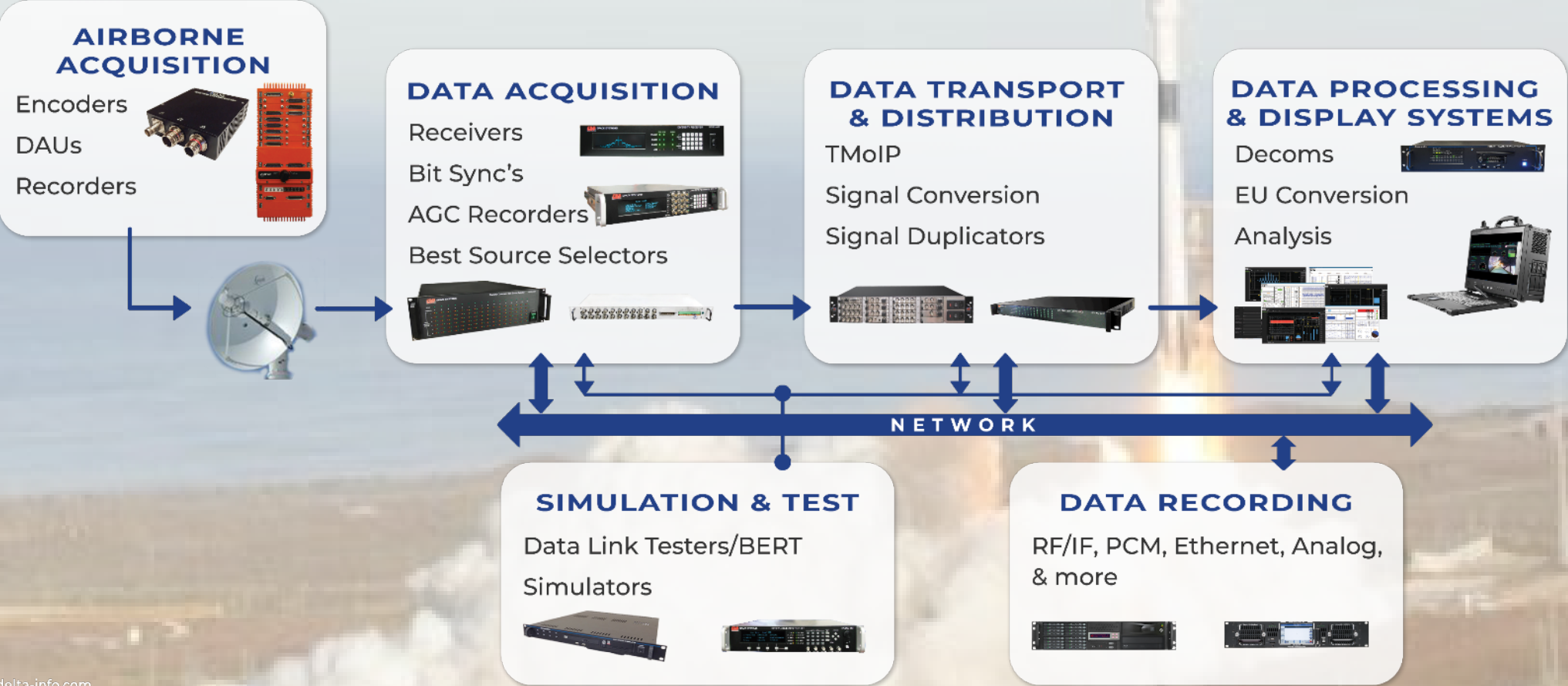


DELTA TELEMETRY SYSTEMS

NETWORK CENTRIC E2E SOLUTIONS



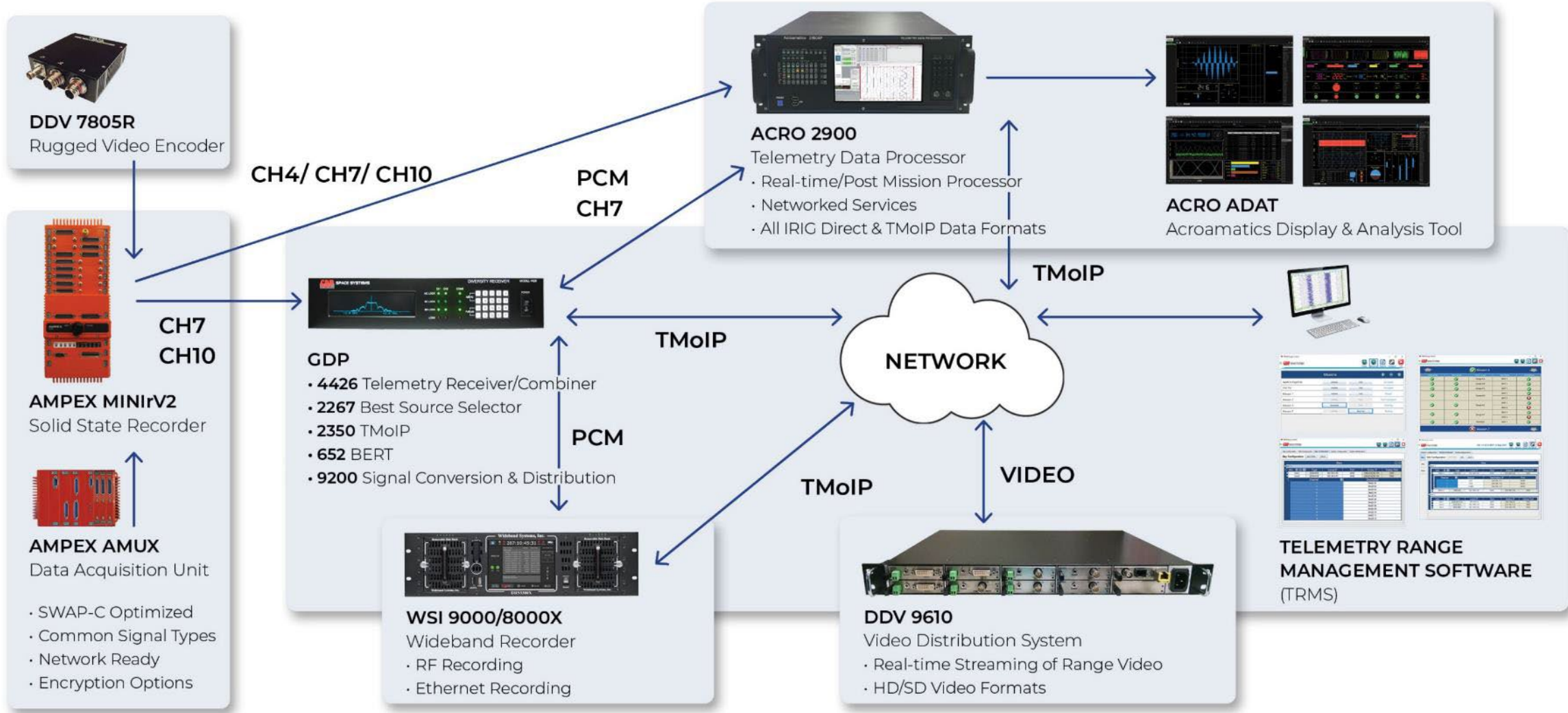
DELTA TELEMETRY SYSTEMS PRODUCT CAPABILITIES



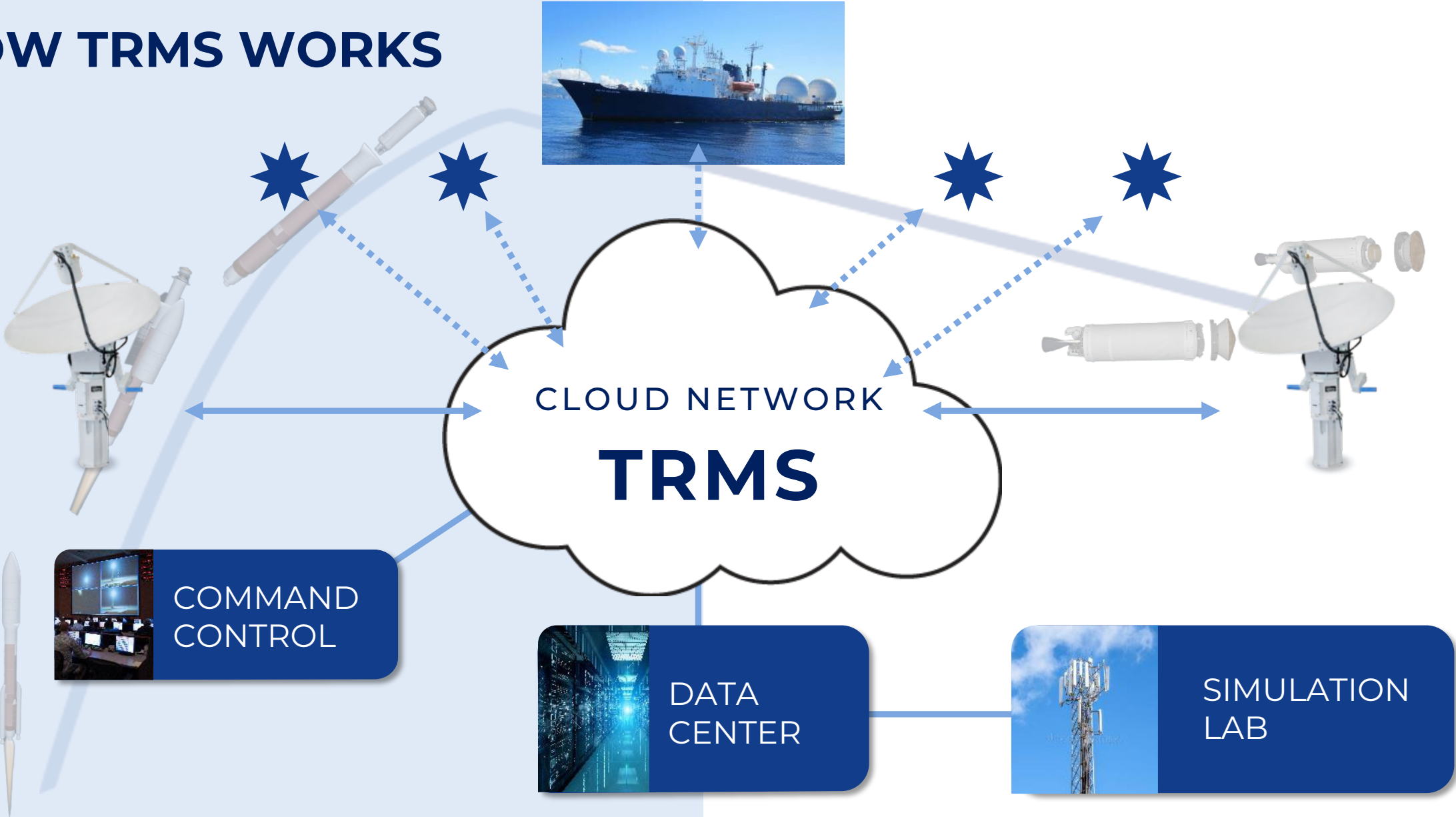
delta-info.com



NETWORK CENTRIC E2E SOLUTIONS



HOW TRMS WORKS



WHAT CAN TRMS DO FOR YOU?

01

SIMPLIFY

Simplifies management and operation of TMoIP systems

02

SCALE

Easily scales from small systems to large systems

03

STREAMLINE

Removes the difficulty of configuring network elements from the operator

04

SUPERVISE

Provides troubleshooting, status and reporting capability

05

SHADOW

Operational log for all devices used in the mission



TRMS SCREEN | STATION CONFIGURATION

TRMS Range Control

302 09:17:28 EDT 29 Oct 2018

Site Configuration | BSS Configuration | Bay Configuration | Recorder Configuration | **Station Configuration** | Station Maintenance

Station Configuration Save Config Edit

Station ID: M-ITC CWS IP: 192.168.0.117 Back Up Drive: <NULL>

Version Information

Data	Version	Checksum
RMS Config File:	20180909.001	FFFFFFFF
Control Software:	1.2.9_c	00000000
Status Software:	0.0.0	FFFFFFFF

Valid Address Ranges

Protocol	Start	End
Tcp/Ip (IPv4)	0.0.0.0	0.0.0.0
Multicast (IPv4)	224.0.1.0	238.255.255.255
Tcp/Ip (IPv6)	0	0
Multicast (IPv6)	FF00::1	FF0F:255

Acceptable Quality Thresholds

Eb/No (dB): 4 DQE: 20 BER: 1.0E-6

Folder Paths

Mission Reports: C:\ProgramData\GDP\IRMS\Reports

Mission Configurations: C:\ProgramData\GDP\IRMS\Missions

Site Configurations: C:\ProgramData\GDP\IRMS\SiteConfigs

BSS Configurations: C:\ProgramData\GDP\IRMS\BssConfigs

Bay Configurations: C:\ProgramData\GDP\IRMS\BayConfigs

Misc Configurations: C:\ProgramData\GDP\IRMS\MiscConfigs

CWS Op Log: C:\ProgramData\GDP\IRMS\ControlOpLogs

CWS Status Log: C:\ProgramData\GDP\IRMS\ControlStatusLogs

PWS Op Log: C:\ProgramData\GDP\IRMS\PerformanceOpLogs

PWS Status Log: C:\ProgramData\GDP\IRMS\PerformanceStatusLogs

Application Files: C:\ProgramData\GDP\IRMS

Available TMoIP Models

2350-M12 4426-M3

Available BSS Models

2267-M16-06

Available Recorder Models

3500

Available Data Processors

2500AP-EN 2900AP-EN
4032-EN

Syslog Server Settings

Syslog Server Logging: Enabled Server IP: 0.0.0.0 Port: 514

307 07:58:09 EDT 03 Nov 2018

Bay Configuration

Unit	Type	Local IP	Port	Status IP	Status Port
Unit 1	2350-M12	192.168.0.21	2000	234.1.2.25	3000

Channel	Destination
1	Vocam-1
2	Decim-2
3	Tapel-1
4	Tapel-2
5	Fiber-1
6	Fiber-2
7	Dempp-1
8	Dempp-2
9	SW1-m1
10	SW1-m2
11	SW1-m3
12	SW1-m4

Configure Mission F15 Winglet Test

F15 Winglet Test

BSS Group

Aircraft TLM	Site	Source
Echo	Rcv2_R	Rcv2_R
Makaha	Rcv2_R	Rcv2_R
Mt.Joy	Oband-L	Oband-L

Weapon TLM	Site	Source
Echo	Rcv4_L	Rcv4_L
Mt.Joy	Oband-R	Oband-R
Echo	Rcv4-L	Rcv4-L

Mission Recorder Allocation T15 Winglet Test

Site	Source	Record
Echo	Rcv2_R	<input checked="" type="checkbox"/>
Makaha	Rcv2_R	<input checked="" type="checkbox"/>
Mt.Joy	Oband-L	<input checked="" type="checkbox"/>
Echo	Rcv4_L	<input type="checkbox"/>
Mt.Joy	Oband-R	<input type="checkbox"/>
Makaha	Rcv1-L	<input type="checkbox"/>

DATA ACQUISITION

Receivers

Bit Sync's

AGC Recorders

Best Source Selectors



TRMS SCREEN | STATIC CONFIGURATION (INITIAL SETUP)

TRMS Range Control

307 07:58:09 EDT 03 Nov 2018

STATUS MISSIONS REPORTS **CONFIGURE** EXIT

Site Configuration BSS Configuration Bay Configuration Recorder Configuration Station Configuration Station Maintenance

Bay Configuration Save Config Edit

Bays

Bay 2

Unit	Type	Local IP	Port	Status IP	Status Port
Unit-1	2350-M12	192.168.0.21	2000	234.1.2.25	3000

Channel	Destination
1	Decom-1
2	Decom-2
3	Tape1-1
4	Tape1-2
5	Fiber-1
6	Fiber-2
7	Decrypt-1
8	Decrypt-2
9	SW1-In1
10	SW1-In2
11	Sw1-In3
12	Sw1-In4

Configure Mission F15 Winglet Test

F15 Winglet Test

Site	Source
Echo	Rcvr2 R
Makaha	Rcvr2 R
Mt Joy	Cband-L
Weapon TLM	
Echo	Rcvr4 L
Mt Joy	Cband R
Echo	Rcvr4-L

Move Receive Station F15 Winglet Test

F15 Winglet Test

Site	Source	Record	BSS Input	BSS Unit	BSS Output
Echo	Rcvr2 R	ic	5		
Makaha	Rcvr2 R	ic	6	BSS 1	2
Mt Joy	Cband L	ic	7		
Echo	Rcvr4 L	ic	8		
Mt Joy	Cband R	ic	9	BSS 1	3
Makaha	Rcvr1 L	ic	10		

TRMS Range Control

302 09:17:28 EDT 29 Oct 2018

Site Configuration BSS Configuration Bay Configuration Recorder Configuration Station Configuration

Station Configuration

Makefile ID: BSSC DWS IP: 192.168.0.107

Version Information

File	Version	Checksum
TRMS Config File	020000000	77777777
Control Software	1.2.1.1	00000000
Makefile	2.0.0	77777777

Valid Address Changes

IP Address	MAC Address	Port
192.168.0.107	00:00:00:00:00:00	2000
192.168.0.108	00:00:00:00:00:00	2000
192.168.0.109	00:00:00:00:00:00	2000
192.168.0.110	00:00:00:00:00:00	2000

Acceptable Quality Thresholds

SNR	BER	BER	BER
10	0.001	0.001	0.001

Available TLM Models Available BSS Models Available Recorder Models Available Data Processors

DATA RECORDING

RF/IF, PCM, Ethernet, Analog, & more



DATA PROCESSING & DISPLAY SYSTEMS

Decoms 

EU Conversion

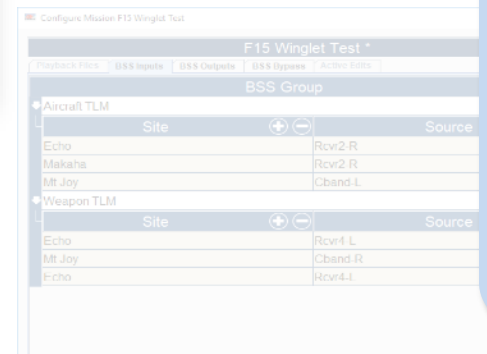
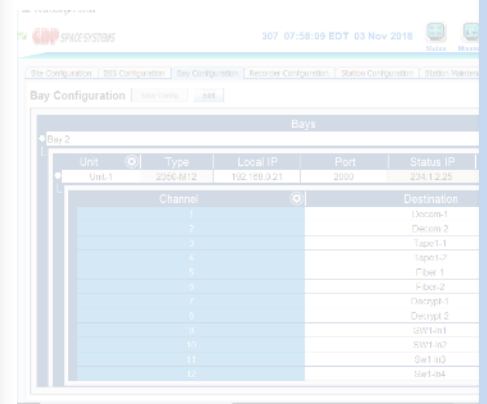
Analysis 



TRMS SCREEN | MISSION SETUP AND CONTROL

Mission Resource Allocation F15 Winglet Test

F15 Winglet Test							
Site	Source	Record	BSS Input	BSS Unit	BSS Output	Record	Group Name
Echo	Rcvr2-R	<input checked="" type="checkbox"/>	5	BSS 1	2	<input type="checkbox"/>	Aircraft TLM
Makaha	Rcvr2-R	<input checked="" type="checkbox"/>	6				
Mt Joy	Cband-L	<input checked="" type="checkbox"/>	7				
Echo	Rcvr4-L	<input type="checkbox"/>	8	BSS 1	3	<input checked="" type="checkbox"/>	Weapon TLM
Mt Joy	Cband-R	<input type="checkbox"/>	9				
Makaha	Rcvr1-L	<input type="checkbox"/>	10				



DATA ACQUISITION
Best Source Selectors



DATA TRANSPORT & DISTRIBUTION

TMoIP
Signal Conversion
Signal Duplicators



THE DELTA DIFFERENCE

01

Network Centric Range Modernization

Real solutions – now!

RGNext
Range Generation Next
APPROVED!



02

Virtual Range Management & Control

04

TMoIP, 218-20 Protocol

03

RF Range Recording



05

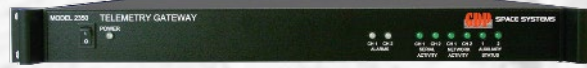
Format Validation & Simulation



06

Real-Time TM Processor Data Distribution





The Space Force RCU2 Telemetry System at the Eastern Range, including GDP 4426 receivers, GDP 2350 TMoIP gateways & WSI recorders, **successfully completed Level 2 Formal Testing** at Tel-4 and JDMTA.

